

Online	NewsWit	Link :	http://www.newswit.com/.prop/2017-09-15/62b7d2b507ce88c1a4866300691a8d62/		
PageView :	5,000	วันที่ :	16 กันยายน 2560	หน้า :	ข่าว
Ad Rate :	5,000	AD Value :	5,000	PR Value :	15,000



ล้ำหน้ากว่าใคร
ใช้ชีวิตที่ The Canvas
ทำเลดี ราคาคุ้มค่า ทุกอย่างลงตัว

ฟรี! ก่อสร้าง เริ่ม 3.65 ลบ.*
ลงทะเบียน

TCC Assets Launches HORECA SQUARE The First HORECA Business Landmark in Thailand and the Largest in ASEAN

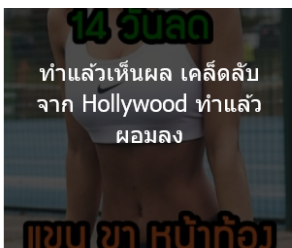
Real Estate Press Releases วันศุกร์ที่ ๑๕ กันยายน พ.ศ. ๒๕๖๐ ๑๕:๐๔ น.

ขนาดตัวอักษร: ใหญ่ กลาง เล็ก

Share 0 Like 0 Tweet



TCC Assets (Thailand) Co., Ltd and Asia HORECA Co., Ltd. recently launched the exciting HORECA SQUARE @CW TOWER. HORECA SQUARE not only serves as a wholesale center of multifarious HORECA products and services, but also features a valuable training center and an intriguing HORECA community. This is the first of its kind in Thailand and the largest in ASEAN.



"HORECA SQUARE is a phenomenal real estate project under the management of TCC Assets (Thailand) Co., Ltd., which focuses on the businesses of hotels, restaurants, cafes and catering services. Known in short as HORECA, it offers unprecedented experiences of comprehensive services for businessmen in the real estate sector, Mr. Panote Sirivadhanabhakdi, Group Chief Executive Director, TCC Assets said.

"The launching of HORECA SQUARE today will undoubtedly transform the Ratchadapisek area into an ASEAN landmark, the first of its kind in Thailand, and attract foreign business operators to this significant point where they can negotiate successful business

deals. The Square serves as a central platform for Thai entrepreneurs to showcase their products and services so they can ascend the world stage and spearhead Bangkok – and the country – into becoming ASEAN's business hub, enjoying sound economic growth on the Asian continent," he added.

The project's strength comes from the fact that it is strategically situated in one of Bangkok's best commercial locations – Ratchadapisek Road, which is where TCC Assets manages several projects under the concepts of solidifying the business sector and linking Thailand's economy to ASEAN. These prime projects include C-Asean, CW TOWER and Street Ratchada projects.

"I have high expectations that HORECA SQUARE @CW TOWER will become the HORECA industry hub in Thailand and other ASEAN countries. It will also assist and guide HORECA business owners to sustainable growth and usher in prosperity to all associated with the project, whether they are tenants, owners, or business partners, and ultimately the country's economy," he concluded.

Managed by Mr. Panote, TCC Assets, with a commitment to comprehensive property development, holds 100% in Asia HORECA Company Limited or Asia HORECA. Its responsibility in the HORECA industry is to implement three business plans: 1) Run HORECA SQUARE @CW TOWER wholesale center; 2) manage HORECA ASIA trade exhibitions; and 3) manage the E-COMMERCE system for the HORECA industry.

Hmmm...can't re page
Try this
• Make sure you've go web address:
http://widaetserver.a

ข่าวข่าวเมืองลิง

กรมสรรพากร ธนาคารกรุงเทพ ธนาคารกรุงไทย ธนาคารออมสิน ไปรษณีย์ไทย การบินไทย ธนาคารกสิกรไทย hotmail เพียร์ริค jobkk ธนาคารไทยพาณิชย์ ควรรวม ดีแทค ไทยพาณิชย์ แจงใส่เนเจอร์ ธนาคารอาคารสงเคราะห์ 12car กรุงไทย ธนาคารกรุงศรีอยุธยา กระทรวงสาธารณสุข การรถไฟแห่งประเทศไทย มิตรชนธิ เมืองทอง ธนาคารทหารไทย ตลาดหลักทรัพย์แห่งประเทศไทย วัฒนา ขาผ่า วันหยุดธนาคารแห่งประเทศไทย กระทรวงพาณิชย์ เวลาประเทศไทย ปตท ธอส บิ๊กซี กรมลด กรมศุลกากร แม็คโคร ธนาคารกรุงศรี

Market-Comms Co.,Ltd
12/123 VisionVille 5 Soi Samakki 34 Samakki Road
T. Tha-Sai A. Muang Nonthaburi 11000 Thailand
Tel. 662 575 2415-7 Fax. 662 575 2418
Email. info@market-comms.co.th
www.market-comms.co.th

บริษัท มาร์เก็ต-คอมส์ จำกัด
12/123 วิชั่นวิลล์ 5 ซอยสามัคคี 34 ถนนสามัคคี
ตำบลท่าทราย อำเภอเมือง จังหวัดนนทบุรี 11000
โทรศัพท์ 662 575 2415-7 โทรสาร 662 575 2418
อีเมล info@market-comms.co.th
www.market-comms.co.th



HORECA SQUARE @CW TOWER is firmly in the reins of Mrs. Ladda Mongkolchaivivat, a leading B2B marketer of TCC group. She has more than 20 years of experience and currently assumes the managing director position at Asia HORECA Co., Ltd. together with a team of professionals to develop this wholesale center.

"The management of HORECA SQUARE @CW TOWER needs not only a strategic business plan for a wholesale center, but also a new concept and tactics," said Mrs. Ladda Mongkolchaivivat, Managing Director of Asia HORECA. "It will incorporate the concept of the B2B trade fair market and regularly host activities such as special events, educational seminars, domestic and international roadshows, as well as persuade target entrepreneurs in ASEAN countries to visit this wholesale center and negotiate business with domestic operators.

"HORECA SQUARE has gained cooperation from the public and private sectors, such as the Ministry of Tourism and Sports, the Department of Industrial Promotion under the Ministry of Industry, the Department of Foreign Trade at the Ministry of Commerce, commercial banks, and a host of other organizations that will become partners of the center as well. The Hotel Management Association, the Thai Restaurant Association, Dusit Thani College, and many travel business operators will join our activities and promotions to enhance the potential of the HORECA business in order to grow together," she added.

HORECA SQUARE @CW TOWER is located on floors 3-5 of CW Tower. Each floor is unique, with a variety of products and services provided. The 3rd floor showcases leading innovative HORECA products and services. The 4th floor features the "HORECA Community" and HORECA Business Center. The 5th floor is a wholesale distribution center, encompassing more than 10,000 products and services from around the world.

HORECA SQUARE is open daily from 10:00 to 19:00. Its target customers are HORECA entrepreneurs, condominium and real estate operators, as well as a young generation who want to start a business.

"These functions ensure HORECA SQUARE @CW TOWER will effortlessly achieve its goals while uniting HORECA operators in all segments – hotels, restaurants, cafes, bakeries, and catering services – so that we are able to compete and grow sustainably," concluded Mrs. Ladda.

For more information, feel free to contact HORECA SQUARE at [02-643-7691](tel:02-643-7691) or via email horecasquare@asiahoreca.co.th or visit <https://www.facebook.com/horecasquare> and www.horecasquare.com.

Market-Comms Co.,Ltd
12/123 VisionVille 5 Soi Samakki 34 Samakki Road
T. Tha-Sai A. Muang Nonthaburi 11000 Thailand
Tel. 662 575 2415-7 Fax. 662 575 2418
Email. info@market-comms.co.th
www.market-comms.co.th

บริษัท มาร์เก็ต-คอมส์ จำกัด
12/123 วิชั่นวิลล์ 5 ซอยสามัคคี 34 ถนนสามัคคี
ตำบลท่าทราย อำเภอเมือง จังหวัดนนทบุรี 11000
โทรศัพท์ 662 575 2415-7 โทรสาร 662 575 2418
อีเมล info@market-comms.co.th
www.market-comms.co.th

